



**Location:** South elevation

**Description of Works:** Windows and EPDM fitted, low level cavity tray



**Location:** Sports hall, West elevation

**Description of Works:** SFS and cement board fitted after Scaffold adapted, low level blockwork  
Metal studwork and plaster board still to do



**Location:** Teaching block Ground floor

**Description of Works:** Beam encasements and columns to achieve fire resistance



**Location:** Teaching block 1<sup>st</sup> floor

**Description of Works:** Metal stud and boarding partition wall, 1<sup>st</sup> fix mechanical and electrical through letter box





**Location:** Sports hall roof

**Description of Works:** VCL layer, parapet upstands flat lay complete, ready to start mineral felt  
2no outlets to be fitted



**Date:** 28/09/23

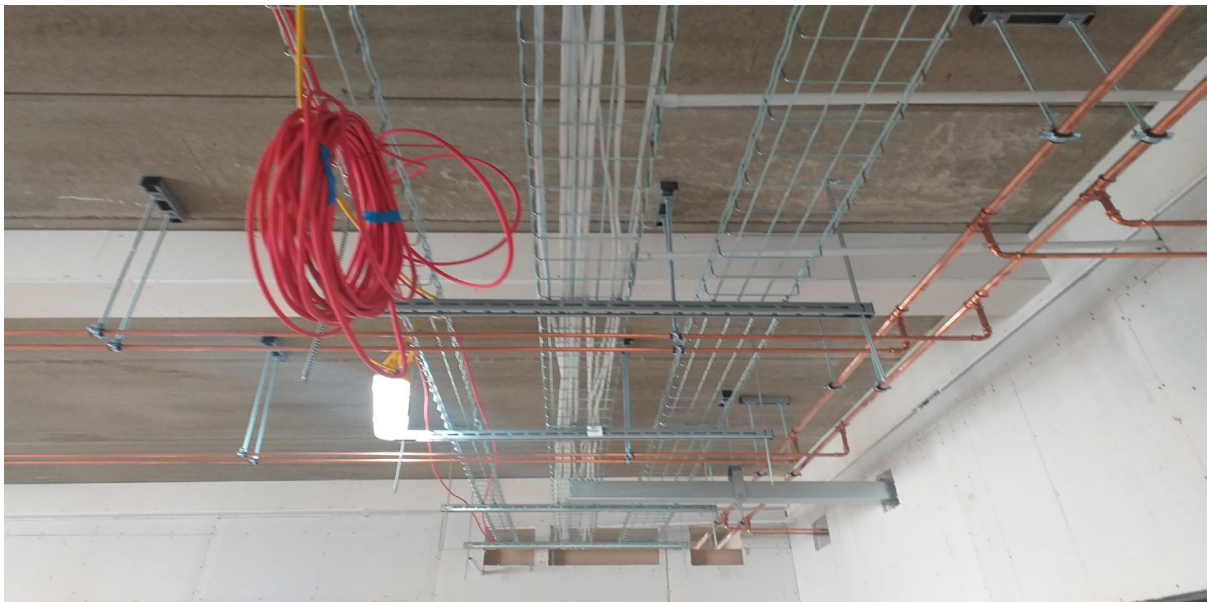
**Location:** Teaching block roof

**Description of Works:** Mineral felt to the flat of the roof 80% complete, parapets are ongoing



Location: Teaching block

Description of Works: Windcatcher tops fitted onto the teaching block roof for passive ventilation



Location: Teaching block

Description of Works: Mechanical electrical basket containment fitted, begin pulling cables through, letter box openings to allow the services to pass through, to be fire batted once services complete





**Location:** Teaching block

**Description of Works:** In wall insulation to keep it cool in summer and warm in winter



**Location:** Façade South elevation

**Description of Works:** Progress on the facade