

# **BORDEN GRAMMAR SCHOOL**



**SIXTH FORM  
INFORMATION  
BOOKLET  
2025**



BORDEN  
GRAMMAR  
SCHOOL



# WELCOME

A very warm welcome to the Sixth Form at Borden Grammar School. We are proud of our inclusive but prestigious Sixth Form where our students are pushed to work hard and reach their full potential in an academic, challenging and supportive environment.

During your time in the Sixth Form you will have a greater level of independence and responsibility, which helps bridge the gap between school and university or the world of work.

As well as your subject lessons you will be expected to use independent study periods effectively. In order to help you with this we have a well equipped and resourced Sixth Form study room as well as a dedicated Sixth Form study area within the main school library.

The Sixth Form is a key community within the school that brings together both male and female students that are passionate about their subjects and ambitious for their future.

**Mr C Brinn**

**Assistant Headteacher - Head of Sixth Form**

Talks will take place at 5:45pm and  
6:20pm in the Auditorium.



Please scan the QR code to the left to see our prospectus and further information on courses we offer.

If you need any further information, do contact us on  
01795 424192 or by email at  
school@bordengrammar.kent.sch.uk



BORDEN  
GRAMMAR  
SCHOOL

# ADMISSION TO THE SIXTH FORM AT BORDEN

## ENTRY REQUIREMENTS

The school will admit boys and girls to Year 12 who obtain the entry requirement of:

- At least 5 GCSE passes at grades 9-5 in the new qualifications (or A\*-B grade in the old GCSEs) including English (either Literature or Language if both were taken) and Mathematics;
- Preference on Advanced Level courses will be given to those students securing at least a grade 6 (or grade B in the old GCSE assessment system) in the subject they wish to study.

For students wishing to commence a new course at Advanced Level their performance in a GCSE subject that relates to the new subject will be paramount; in certain subjects the minimum entry requirement is higher and this is noted in the sixth form prospectus under individual subjects.

## ADMISSION INFORMATION

Priority for admission to Year 12 will be given to existing students transferring from Year 11.

The PAN for external candidates will be 30 but this figure may be exceeded in the event that this and the number of internal students transferring into Year 12 is less than the overall total figure for the year group. Offers will be made on the basis of predicted performance at GCSE, with the requirement that the above grades are achieved in the final examinations prior to entry to the Sixth Form and the pupil's chosen subjects being accommodated on the timetable, in feasible group sizes. All offers made in Year 11 are conditional on pupils meeting the grade criteria specified and will only be realised upon confirmation of actual GCSE results. Offers will be made before the end of May 2024. Where learners have achieved better results than predicted grades they will be considered on the basis of grades achieved and ranked accordingly for any places that become available as a result of other learners failing to meet the required entry levels. The school will admit external students to Year 13 if there is a vacant place, if the specification studied in Year 12 dovetails with the Year 13 provision at the school, Admission to the Sixth Form 2024 and if the student would have met the entrance requirement to join the school in Year 12.

In the case of oversubscription, the following criteria will be applied in the order laid out:

- a) Children in the Care of the Local Authority – as defined above**
- b) Internal candidates transferring from Year 11**
- c) Free School Meal eligibility – as defined above**
- d) Current Family Association – as defined above**
- e) Health and Special Access Reasons – as defined above**
- f) Traditional School Area – as defined above**

In the case of oversubscription within one of the above criteria, places will be allocated according to the proximity of the student's home to the School, as defined above. Parents/Carers/Guardians have a statutory right of appeal, should an application for a place be refused, by writing to The Clerk to the Trustees, care of the school, marking the envelope 'Sixth Form Appeal'. Later applications for places in the Sixth Form will be considered if places in appropriate subjects are still available after all other applicants have been considered.





# ADMISSION TO THE SIXTH FORM AT BORDEN

## PATHWAY OPTIONS

	<b>Pathway 1 4 A-Levels</b>	<b>Pathway 2 3 A-Levels &amp; EPQ</b>
Entry Grades	Mainly 9-7 in GCSE's 9-7 in chosen subjects	5 or more 9-5 (inc. Maths & English) 6+ in chosen subjects
Year 12 Options	4 A Levels or equivalents (inc. 2 facilitating)	3 A Levels or equivalents & EPQ
Year 13 Options	Complete 3 or 4 A Levels	Complete 3 A Levels
Likely Destination	Oxbridge/Russell Group Uni Degree Apprenticeship Apprenticeship	Top 30 Uni Degree Apprenticeship Apprenticeship

## ENTRY REQUIREMENTS FOR SUBJECTS

<b>Subject</b>	<b>Recommended Entry Requirements</b>
Art	6+ Art, DT or Photography, 5+ in English Language
Biology	7+ Biology or 7,7 in Comb Science, 6+ in Maths
Business Studies	5+ in English & Maths or 6+ in Business Studies
Chemistry	7+ Chemistry or 7,7 in Comb Science, 6+ in Maths
Design Technology	6+ Art, DT or Photography, 5+ in English Language
English	6+ in English Language and/or Literature
Film Studies	6+ in English 5+ in History/Geography/RS
French	6+ in French
Further Mathematics	8+ in Mathematics
Geography	6+ in Geography, 5+ in English
History	6+ in History, 5+ in English
Information Technology	
Mathematics	7+ in Maths
Photography	6+ Art, DT or Photography, 5+ in English Language
Physical Education	6+ in PE, 5+ in Biology & Chemistry
Physics	7+ Physics or 7,7 in Comb Science, 6+ in Maths
Politics	5+ in English, 5+ in History/Geography/RS
Psychology	6+ in English/History/Geography/RS, 5+ in Maths
Spanish	6+ in Spanish
Statistics	6+ in Maths, 5+ in English

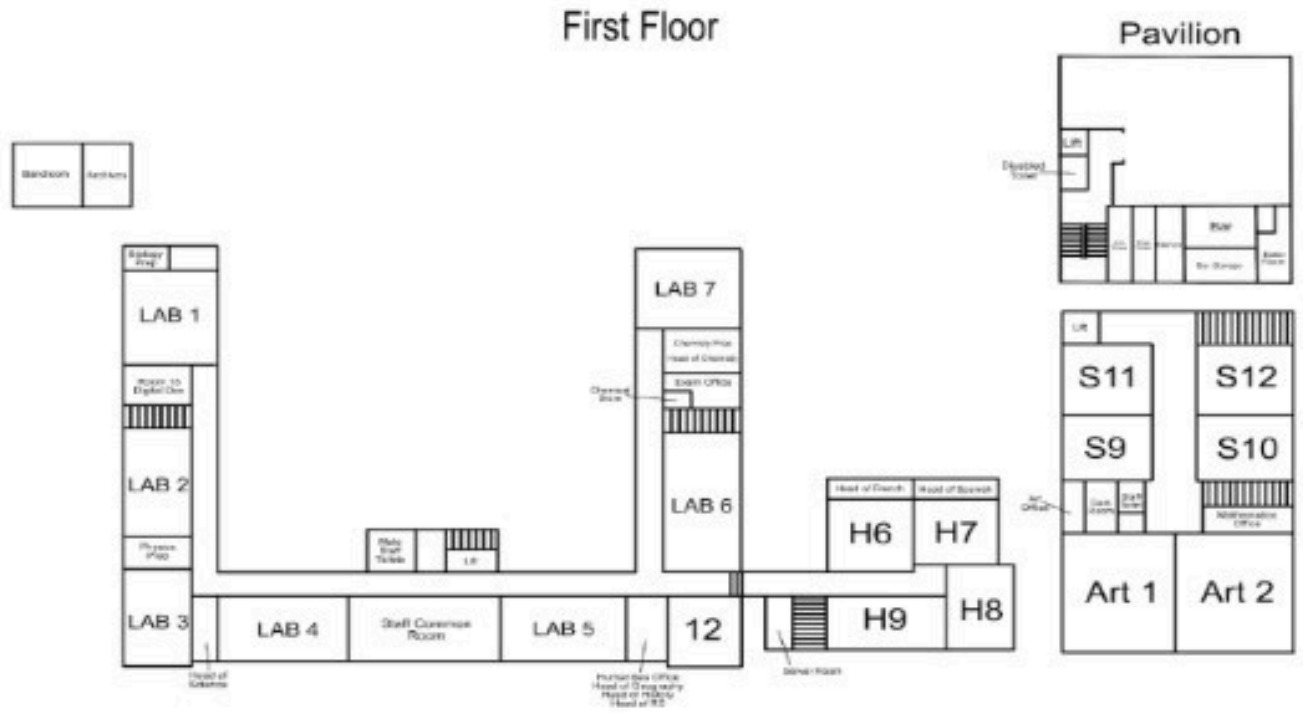
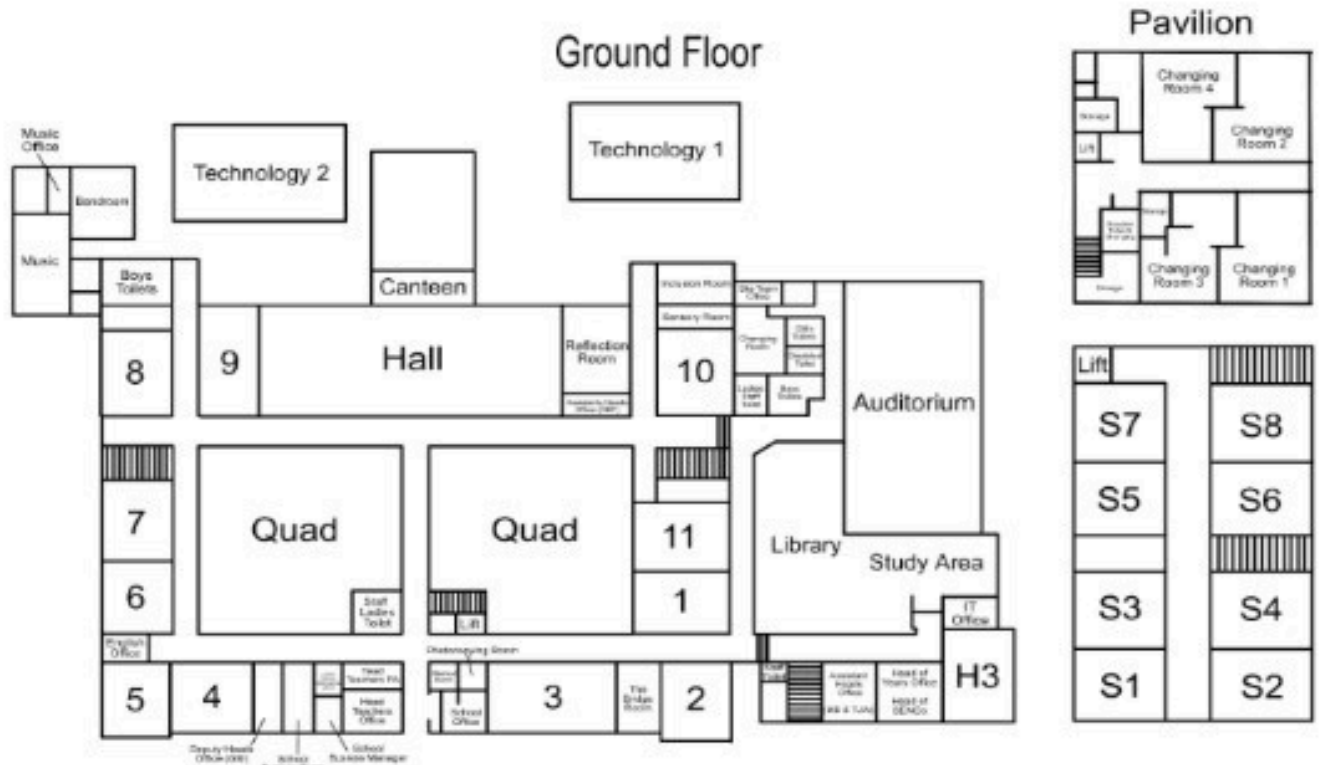
\*Be aware of the additional entry requirement of a grade 7 to study Mathematics and a grade 8 to study Further Mathematics.

Borden Grammar School 6th Form Entry requirements are;  
5+ GCSE grades at 9-5 including English & Maths. Preference to courses is given to those students who achieve a grade 6 in their chosen subjects.  
Although the minimum entry requirements to get into the Sixth Form are outlined above, the table below shows the recommended entry grades for subjects.



# Borden Grammar School Sixth Form Open Evening Map & Subject Areas Information

- |  |   |
|--|---|
| <p>Art/Photography - A1<br/>         3D Design - A2<br/>         Business - V2<br/>         Biology - Lab 4<br/>         Physics - Lab 4<br/>         Chemistry - Lab 4<br/>         History - S6<br/>         Politics - S6<br/>         Maths/F Maths/Statistics - S10</p> | <p>English - 4<br/>         Film Studies - 6<br/>         Psychology - 1<br/>         Physical Education - 11<br/>         Spanish - H7<br/>         French - H6<br/>         Geography - S1<br/>         Sixth Form Study - Upstairs V Block</p> |
|--|---|



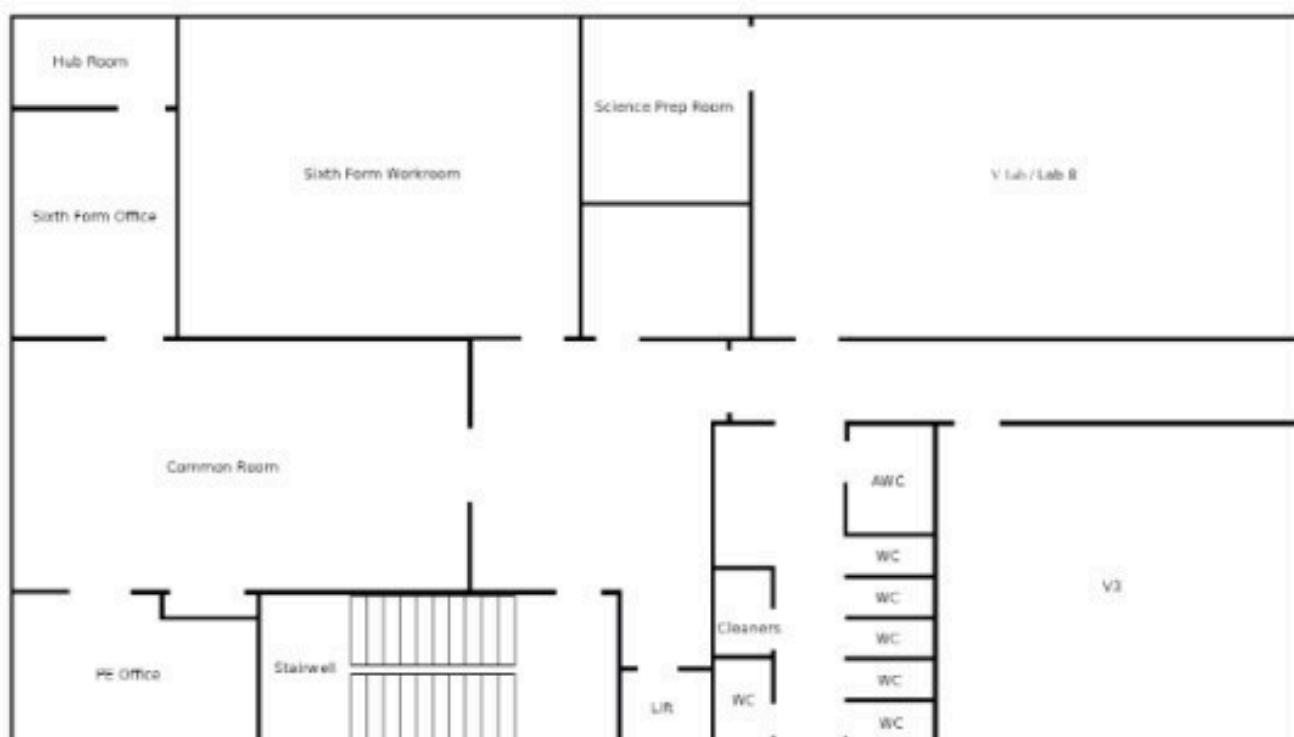


## Borden Grammar School Sixth Form Open Evening Map & Subject Areas Information

### V Block - Ground Floor



### V Block Upper Floor





BORDEN  
GRAMMAR  
SCHOOL

# GET IN TOUCH

We hope that you find this booklet and the Open Evening useful. Please don't be worried about asking lots of questions and do talk to us at any point if you need further guidance.

We look forward to seeing many of you in the near future.

## **CONTACT US :**



01795 424192



[www.bordengrammar.kent.sch.uk](http://www.bordengrammar.kent.sch.uk)



[school@bordengrammar.kent.sch.uk](mailto:school@bordengrammar.kent.sch.uk)



*Avenue of Remembrance  
Sittingbourne  
ME10 4DB*

